

## VS 2

Spannschuhunterteil auf Klebplatte C3

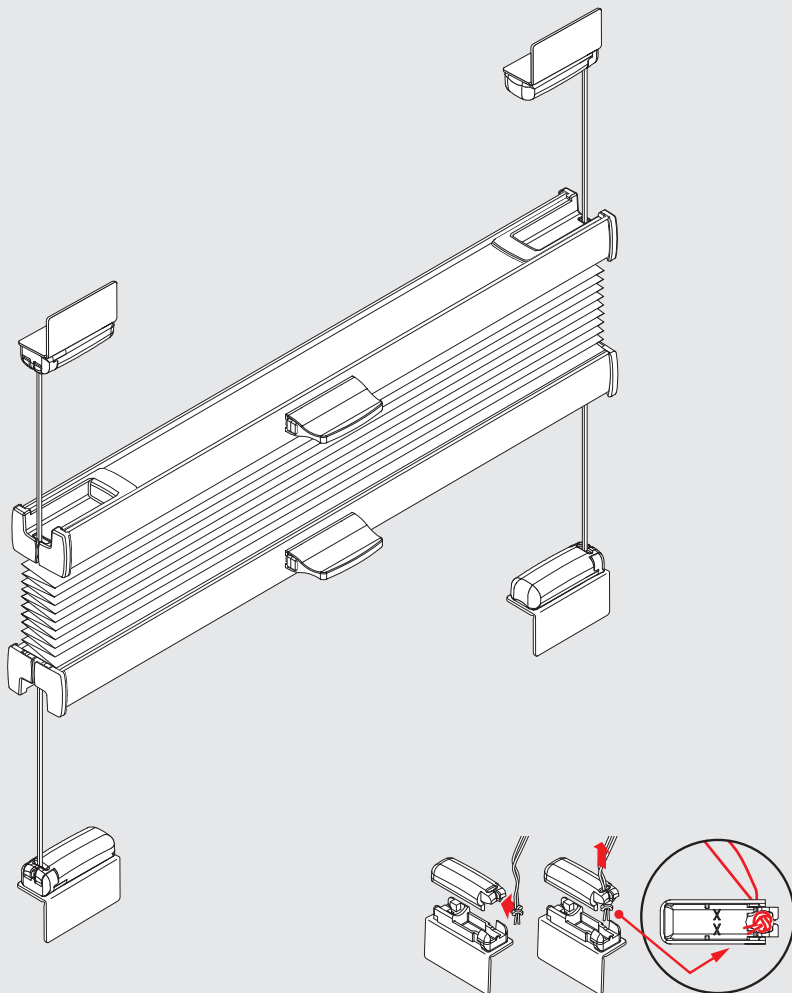
Tensioning shoe bottom on sticky pad

Dolna część buta zaciskowego do klejenia

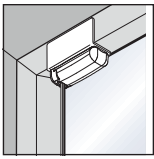
Башмачок-крепление, нижняя часть для приклеивания



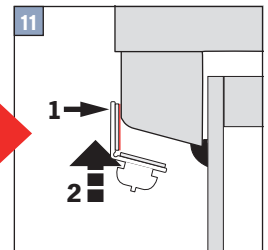
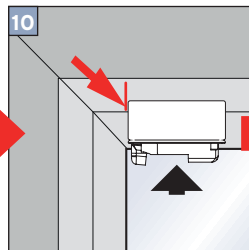
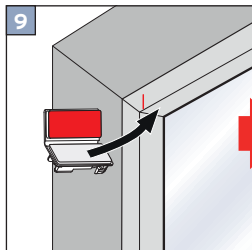
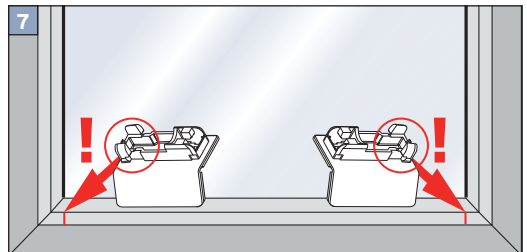
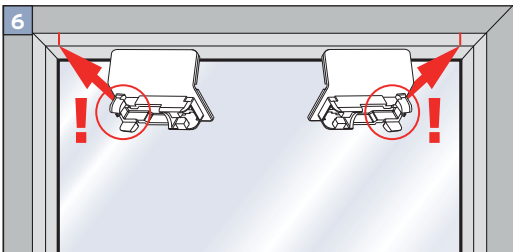
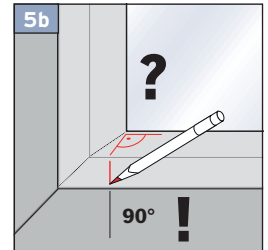
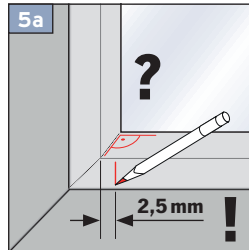
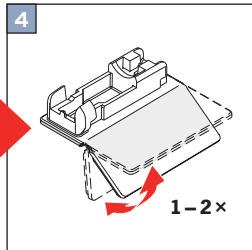
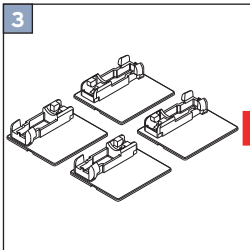
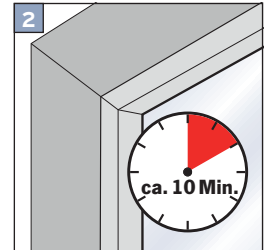
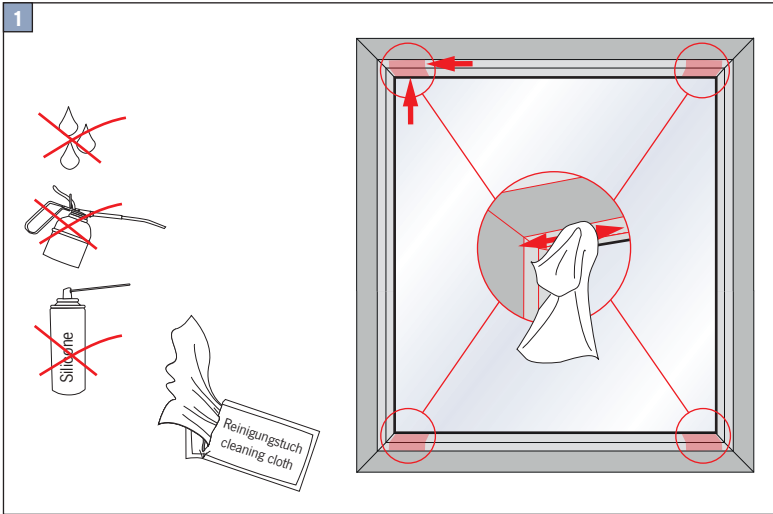
max.  
2 m<sup>2</sup>

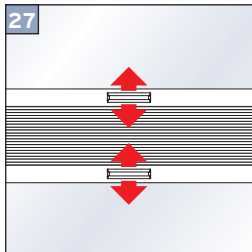
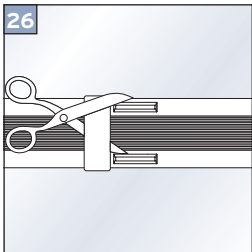
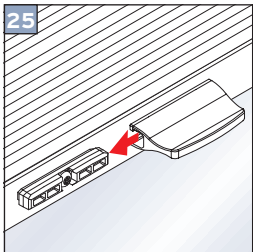
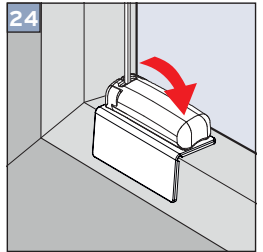
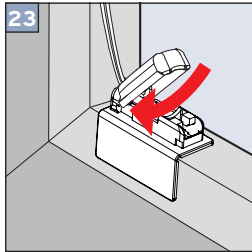
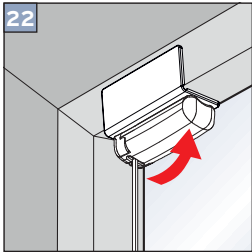
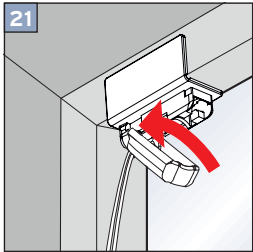
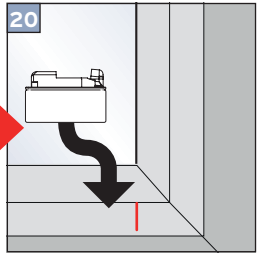
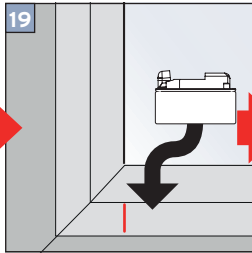
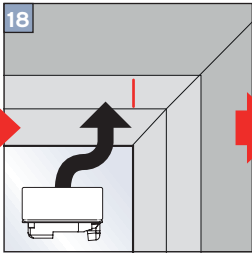
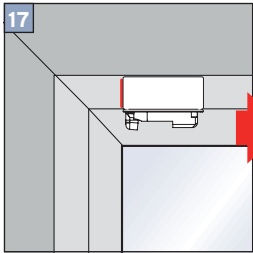
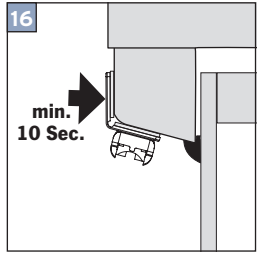
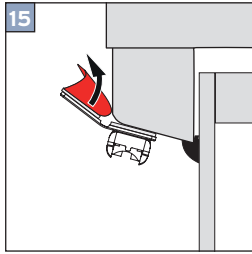
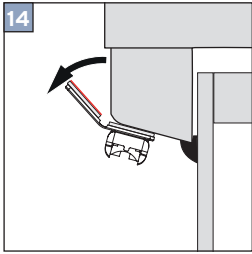
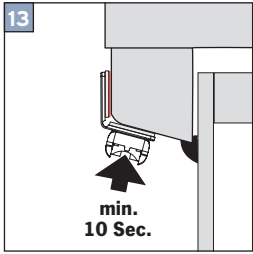


**Wichtig! Bitte mit der Pflegeanleitung aufbewahren! • Important! Please keep together with care instructions!**  
**Ważne! Proszę przechowywać z instrukcją pielęgnacji! • Внимание! Хранить вместе с инструкцией по эксплуатации!**

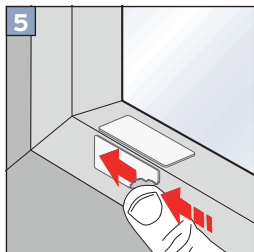
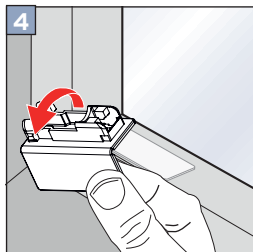
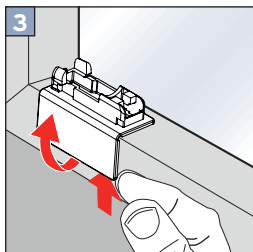
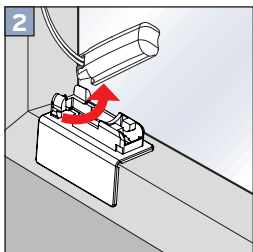
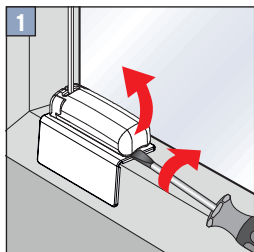


Falzmontage  
Top fixing  
Montaż w świetle szyby  
Монтаж в проем





**Demontage • Disassembly • Demontaž • Демонтаж**



**Option • Опција • Вариант**

